



Black Dyke Road, Thetford, IP26 4JW

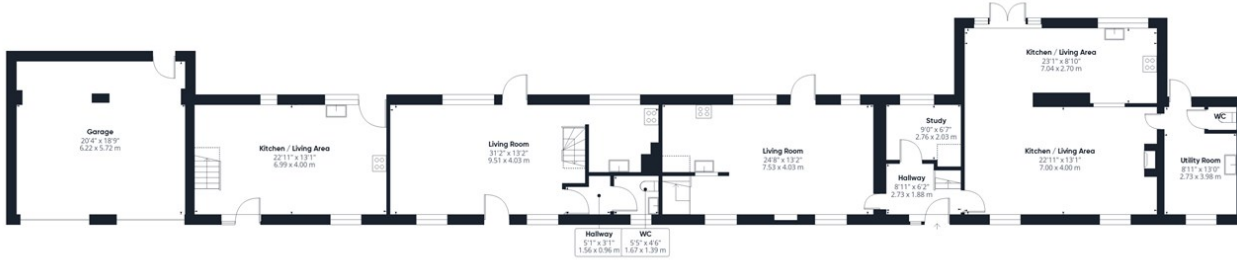
Rent - £650,000 Deposit -

A unique opportunity to purchase this charming period house enjoying rural views on the outskirts of this popular village. Formerly a row of cottages, the property has been extensively remodelled, adapted and refurbished to provide a five bedroom home plus two cottage annexes, ideal for multi generational living, holiday lets or guest houses. Occupying a large garden plot, early viewings are recommended.

- UNIQUE PERIOD HOUSE
- 5 BEDROOM MAIN HOUSE
- VERSATILE ACCOMMODATION
- MULTI-GENERATIONAL LIVING
- DOUBLE GARAGE
- RURAL LOCATION
- ADDITIONAL ONE BEDROOM AND TWO BEDROOM COTTAGE
- OPPORTUNITY FOR AIR BNB
- LARGE PLOT
- VIEWINGS RECOMMENDED



Council Tax Band: F - EPC Rating: E 42



Ground Floor

Approximate total area⁽¹⁾
 3651 ft²
 339 m²
 Reduced headroom
 33 ft²
 3.1 m²



Floor 1

(1) Excluding balconies and terraces

Reduced headroom
 Below 5 ft/1.5 m

Calculations reference the RICS IPMS 3C standard. Measurements are approximate and not to scale. This floor plan is intended for illustration only.

GIRAFFE 360

